

Tsunami Aftermath: Near Banda Aceh, Indonesia

**QuickBird Satellite Imagery
January 2, 2005**



**40km SSW of Banda Aceh
2 January 2005**



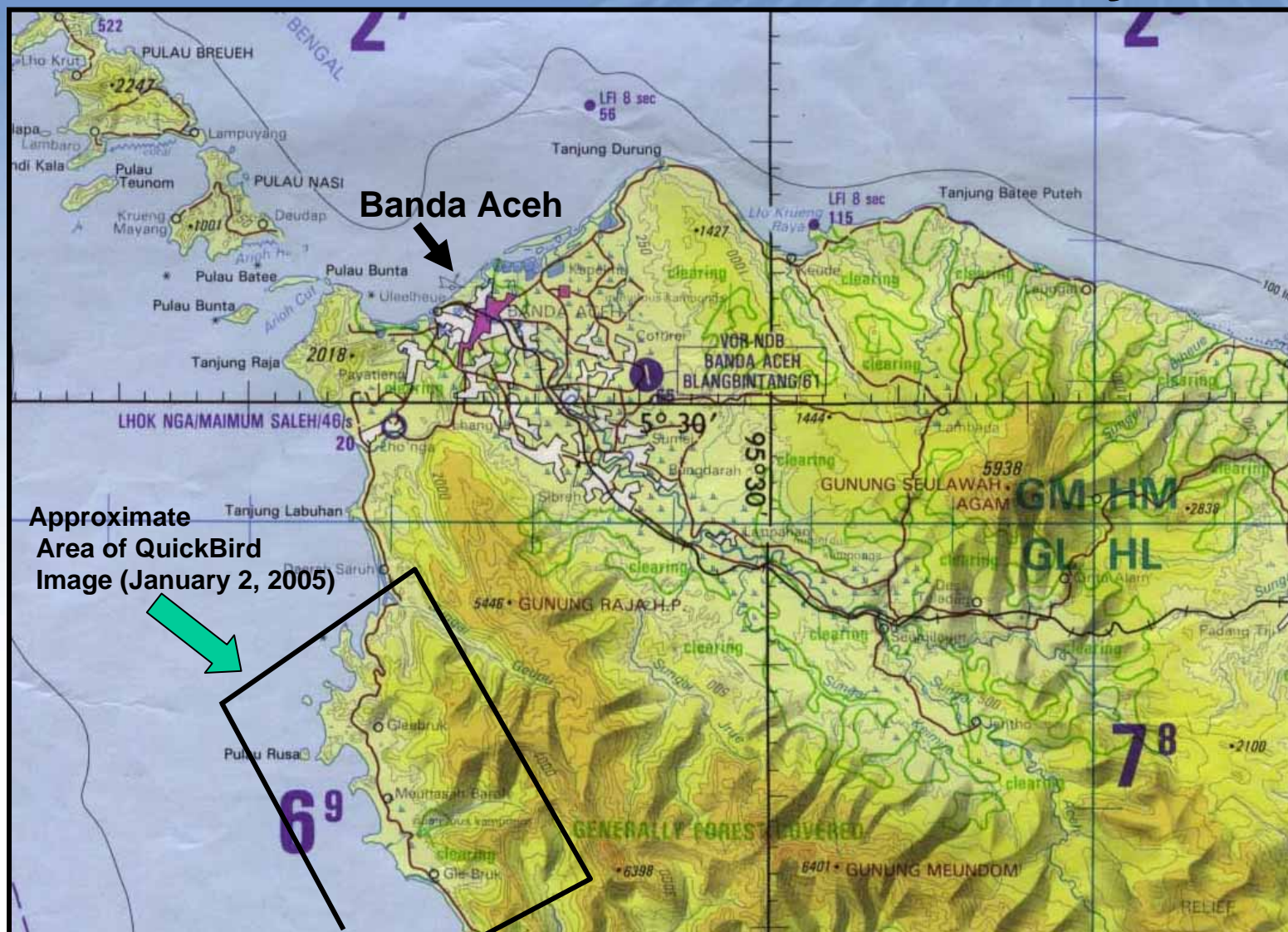
Destroyed Bridge and Road



**Near-Infrared Image of Eroded
Coastline (50km SW of Banda
Aceh)**

DIGITALGLOBE™

Extent of Coverage: January 2, 2005



Catalog ID:
10100100037C9E01

A Changed Coastline

Before the Tsunami



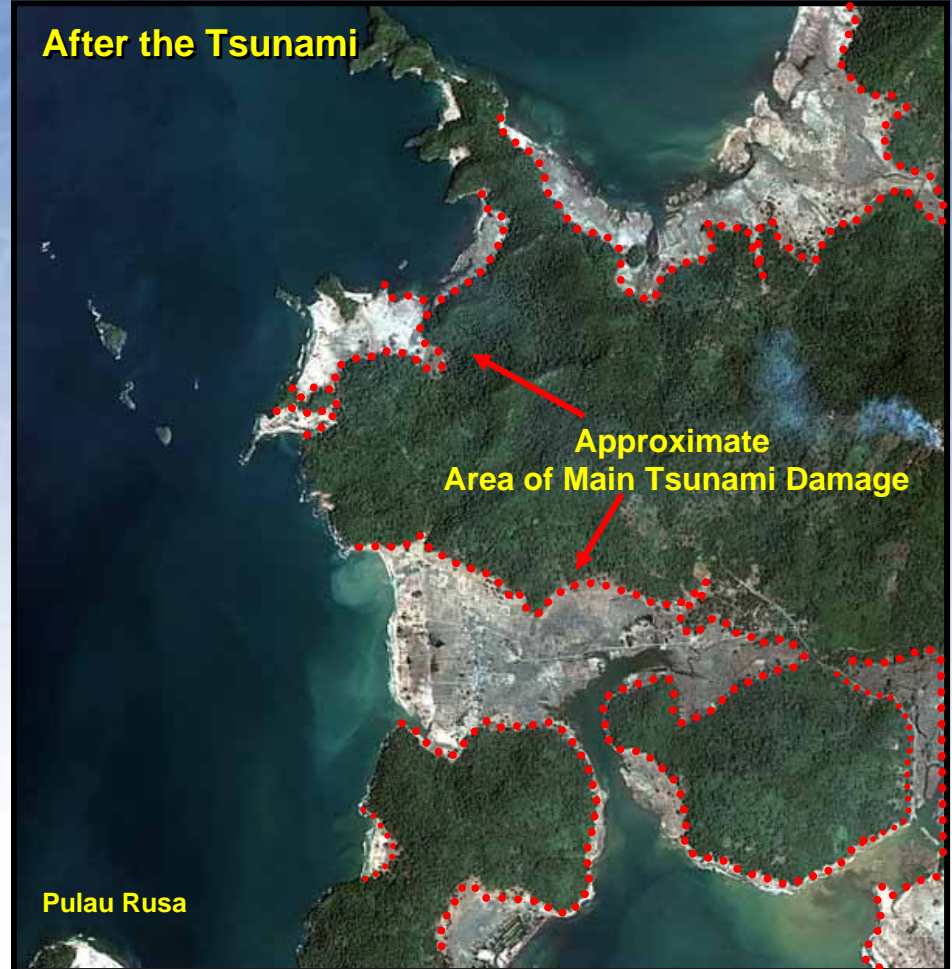
Gleebruk
Indonesia

Pulau Rusa

QuickBird Natural Color Image
April 12, 2004

Catalog ID:
1010010002DA4C05

After the Tsunami



Approximate
Area of Main Tsunami Damage

Pulau Rusa

QuickBird Natural Color Image
January 2, 2005

Catalog ID:
10100100037C9E01

DIGITALGLOBE™

Town Along the Coast: Before



DIGITALGLOBE™

Town Along the Coast: After the Tsunami



DIGITALGLOBE™

Town Along the Coast: Before



DIGITALGLOBE™

Town Along the Coast: After the Tsunami



DIGITALGLOBE™

Roads and Bridges: Before the Tsunami



QuickBird 60-cm Natural Color Image
April 12, 2004

Location: 5-21-53N
95-14-41E

Roads and Bridges: After the Tsunami



Roads and Bridges: Before the Tsunami



Broken Roads, Destroyed Bridges: After the Tsunami



Broken Roads, Destroyed Bridges: After the Tsunami

